

## TECHNICAL DETAILS

- Range: 1~6 Nm
- Resolution: 0.1 Nm
- Tolerance: ± 6%
- Length: 195mm (7.7")
- Weight: 335gr. (11.8oz)
- Automatic quick-release, audible and palpable click, when selected torque is reached.
- Automatic reset after 90°
- Right-handed (CW)

## TIPS

- The insertion and removal of the bit may be difficult due to tight tolerances. Pliers may be used for easier insertion and removal. Please use gloves.
- During calibration, always look straight at and level with the graduated torque scale to avoid calibration errors.
- Always keep torque screwdriver vertical to the flat work surface which prevents "side load" and inaccurate torque readings.

## TORQUE SUGGESTED\*

THREAD	Nm
M2,5	1,0 Nm
M3	1,2 Nm
1/8"	1,4 Nm
M3,5	1,8 Nm
M4	2,7 Nm
M5	5,3 Nm

\* Suggested tightening torque for CMT screws (Class 8.8)

## CALIBRATION

Each torque screwdriver is calibrated according to DIN ISO 6789 & ASME B107.300-2010 standards and is certified to meet the accuracy specifications as outlined in DIN ISO 6789 and ASME B107.300-2010 standards.

## CONVERSION CHART

CONVERT FROM	TO	MULTIPLY BY
ozf-in	lbf-in	0.0625
lbf-in	ozf-in	16
lbf-in	kgf-cm	1.1519
lbf-in	lbf-ft	0.0833333
lbf-in	kgf-m	0.011519
lbf-in	N-m	0.1130
lbf-in	dN-m	1.130
lbf-ft	N-m	1.356
lbf-ft	kgf-m	0.1382
lbf-ft	lbf-in	12
N-m	dN-m	10
N-m	kgf-cm	10.20
N-m	kgf-m	0.10197
N-m	lbf-in	8.8507
N-m	lbf-ft	0.73756
dN-m	lbf-in	0.885
dN-m	N-m	0.100
kgf-cm	lbf-in	0.8681
kgf-cm	N-m	0.09807
kgf-m	lbf-ft	7.233
kgf-m	N-m	9.807

03.60.0352

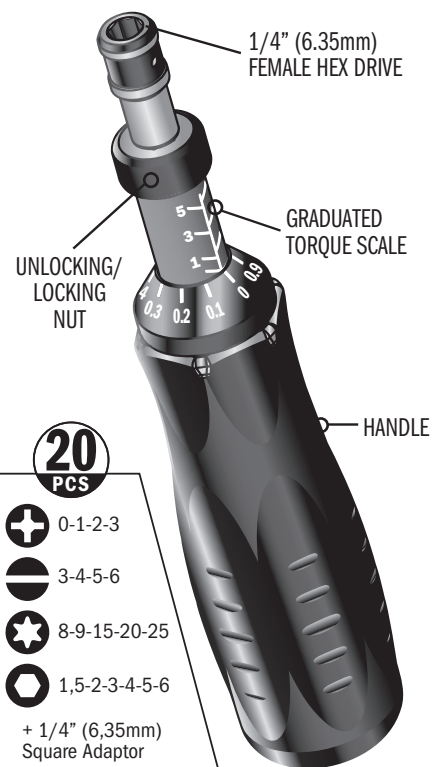
Imported by CMT

### C.M.T. UTENSILI S.p.A.

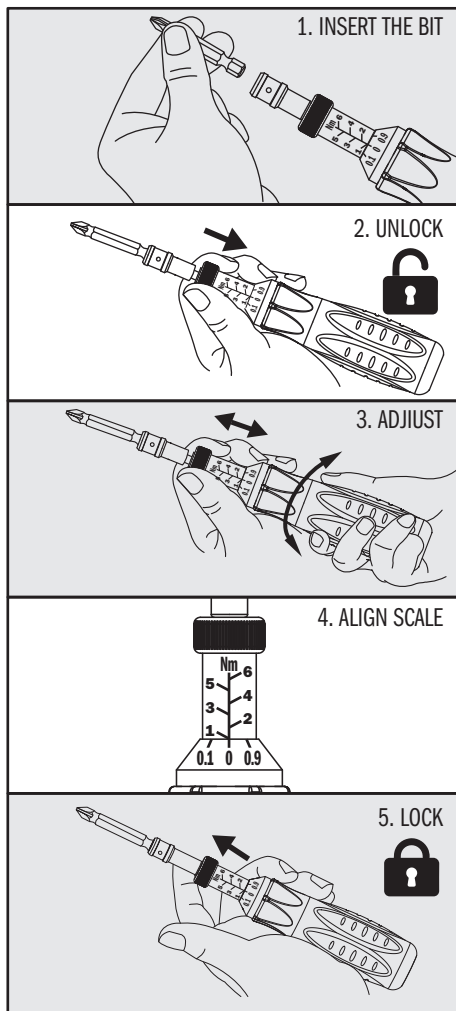
Via della Meccanica  
61122 Pesaro, Fraz. Chiusa di Ginestreto  
Tel. +39 0721 48571 - Fax +39 0721 481021  
[www.cmtoragetools.com](http://www.cmtoragetools.com)

**CMT ORANGE TOOLS®**

## TW-006 ADJUSTABLE TORQUE SCREWDRIVER SET



## OPERATION



## SAFETY INSTRUCTIONS

### WARNING

- USE OF DAMAGED TORQUE SCREWDRIVER, SOCKETS, EXTENSIONS AND ACCESSORIES MAY RESULT IN INJURY.
- DO NOT USE TORQUE SCREWDRIVER AS A HAMMER.
- FAILURE TO CALIBRATE TORQUE SCREWDRIVER MAY CAUSE DAMAGE TO PARTS OR TOOLS.
- DO NOT USE EXTENSIONS ON HANDLE AS DAMAGE TO TORQUE SCREWDRIVER WILL RESULT.
- ALWAYS USE GLOVES WHEN INSERTING AND REMOVING THE BIT.



**ALWAYS USE EYE PROTECTION AND GLOVES WHILE USING TORQUE SCREWDRIVER.**



### INJURY MAY RESULT FROM ELECTRICAL SHOCK

- HANDLE IS NOT INSULATED, DO NOT USE ON LIVE ELECTRICAL OR HIGH VOLTAGE CIRCUITS.



**TO DOWNLOAD THIS USER MANUAL IN A DIFFERENT LANGUAGE, VISIT [WWW.CMTORANGETOOLS.COM](http://WWW.CMTORANGETOOLS.COM)**

## CARE AND MAINTENANCE

1. The torque screwdriver is a precision instrument and must be stored with care.
2. The torque screwdriver must be stored in its protective case and in a clean and dry environment. Keep away from humidity and dirt.
3. The torque screwdriver is lubricated for its entire lifespan and should not be oiled. The only exception is the ratchet head which can be lubricated as needed for smooth operation.
4. The torque screwdriver is a precision measuring instrument. Calibration must be performed by the owner regularly to ensure accuracy. Suggested timeframe for calibration is at least every 12 months or even shorter depending on use and individual situations. Please seek assistance from qualified professionals.
5. Never disassemble the torque screwdriver by yourself. If the torque screwdriver requires disassembly or repair, please seek assistance from qualified professionals. Incorrect action taken to disassemble the torque screwdriver may result in serious damage or injury.